

IEEE TRANSACTIONS ON RADIATION AND PLASMA MEDICAL SCIENCES

July 2025

VOLUME 9

NUMBER 6

ITRPMI

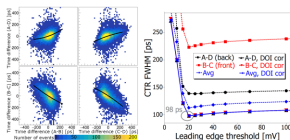
(ISSN 2469-7311)

TRPMS currently has three Special Issues open for submission (details in the specific links below):

- [Deployment of Large Models in Medical Imaging](#) (30th of July)
- [Generative AI in radiation based medical imaging](#) (30th of August)
- [Digital twins in medical imaging and therapy](#) (30th of August)

Features in This Issue

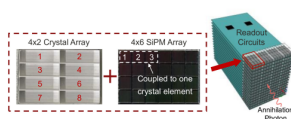
High-Performance Dual-Ended SiPM Readout for TOF-PET With BGO and LYSO:Ce



by Nicolaus Kratochwil, Emilie Roncali, Joshua W. Cates, and Gerard Ariño-Estrada

[Read More](#)

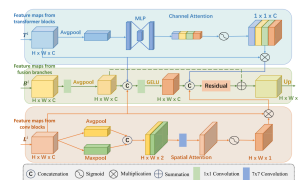
Front-end Electronics Design for 3D Position Sensitive TOF-PET Detector That Achieves ~ 120 ps CTR and ~ 1.2 mm DOI Resolution



by Zhixiang Zhao, Qiu Huang, and Craig S Levin

[Read More](#)

FCT-Net: Efficient Bridge Fusion Incorporating CNN-Transformer Network for Medical Image Segmentation

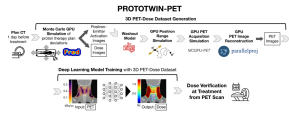


by Bowen Zhou, Xingbo Dong, Xiaowei Zhao, Chenglong Li, Zhe Jin, and Huabin Wang

[Read More](#)

PROTOTWIN-PET: A Deep Learning and GPU-based Workflow for Dose Verification in Proton Therapy With PET

by Pablo Cabrales, Víctor V. Onecha, David Izquierdo-García, Luis Mario Fraile, José Manuel Udías, and Joaquín L. Herraiz



[Read More](#)



IEEE Transactions on Radiation and Plasma Medical Sciences

[VIEW CURRENT ISSUE](#)

[T-RPMS Home](#) | [T-RPMS in IEEE Xplore](#) | [Early Access](#) | [Manuscript Submission](#)



[Website](#) | [Privacy Policy](#) | [Contact](#) | [Unsubscribe](#)

© {{my.copyright year}} IEEE– All rights reserved.

IEEE • 445 Hoes Lane, Piscataway, NJ 08854 USA