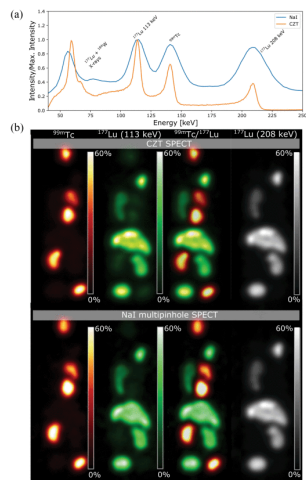


TRPMS has currently three special issues open for submissions (details in the specific links below)

- [Deployment of Large Models in Medical Imaging](#)
- [Generative AI in radiation based medical imaging](#)
- [Digital twins in medical imaging and therapy](#)

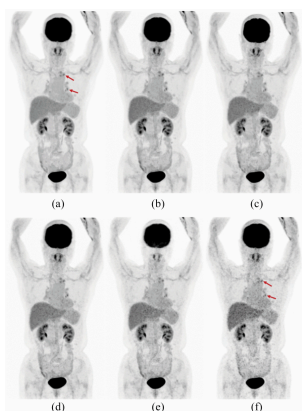
## Features in This Issue



### Individual and Simultaneous Imaging of $^{99m}\text{Tc}$ and $^{177}\text{Lu}$ With a Preclinical Broad Energy-Spectrum CZT-Based SPECT

by Pedro M. C. C. Encarnação, Pedro M. M. Correia, Baharak Mehrdel, Isabella Bredwell, João F. C. A. Veloso, and Javier Caravaca

[Read More](#)



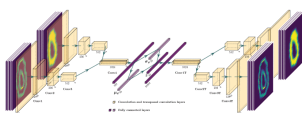
### Performance Evaluation of New PET/CT DigitMI 930

by Bo Zhang, Bingxuan Li, Lei Fang, Xiaoyun Zhou, Ang Li, and Xuan Zhang

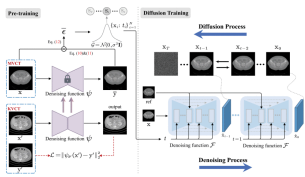
[Read More](#)

### Multi-Branch Generative Models for Multichannel Imaging With an Application to PET/CT Synergistic Reconstruction

by Noel Jeffrey Pinton, Alexandre Bousse, Catherine Cheze-Le-Rest, and Dimitris Visvikis



[Read More](#)



# Semi-Supervised MVCT Enhancement Using Diffusion Model Refined With KVCT Priors

by Mengxun Zheng, Long Tang, Peiwen Liang, Shuang Jin, Xiaotong Xu, and Zhe Su


[Read More](#)



## IEEE Transactions on Radiation and Plasma Medical Sciences

[VIEW CURRENT ISSUE](#)

[T-RPMS Home](#) | [T-RPMS in IEEE Xplore](#) | [Early Access](#) | [Manuscript Submission](#)



Website | [Privacy Policy](#) | [Contact](#) | [Unsubscribe](#)

© {{my.copyright year}} IEEE – All rights reserved.

IEEE • 445 Hoes Lane, Piscataway, NJ 08854 USA