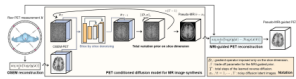


TRPMS has currently three special issues open for submissions (details in the specific links below)

- [Deployment of Large Models in Medical Imaging](#)
- [Generative AI in radiation based medical imaging](#)
- [Digital twins in medical imaging and therapy](#)

## Features in This Issue

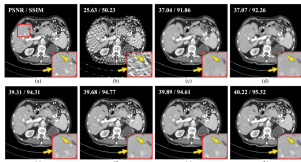
### Pseudo-MRI-Guided PET Image Reconstruction Method Based on a Diffusion Probabilistic Model



by Weijie Gan, Huidong Xie, Carl von Gall, Günther Platsch, Michael T. Jurkiewicz, and Andrea Andrade

[Read More](#)

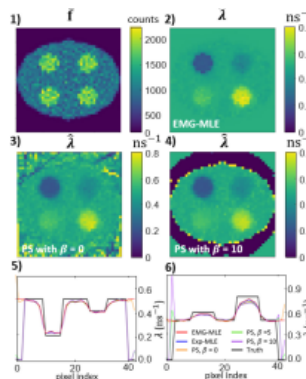
### Progressively Prompt-Guided Models for Sparse-View CT Reconstruction



by Jiajun Li, Wenchao Du, Huanhuan Cui, Hu Chen, Yi Zhang, and Hongyu Yang

[Read More](#)

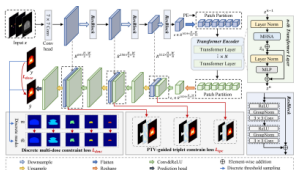
### A Statistical Reconstruction Algorithm for Positronium Lifetime Imaging Using Time-of-Flight Positron Emission Tomography



by Hsin-Hsiung Huang, Zheyuan Zhu, Slun Boopasiri, Zhuo Chen, Shuo Pang, and Chien-Min Kao

[Read More](#)

### D3Net: A Distribution-Driven Deep Network for Radiotherapy Dose Prediction



by Lu Wen, Jianghong Xiao, Zhenghao Feng; Xiao Chen, Jiliu Zhou, and Xingchen Peng

[Read More](#)



# IEEE Transactions on Radiation and Plasma Medical Sciences

[VIEW CURRENT ISSUE](#)

[T-RPMS Home](#) [T-RPMS in IEEE Xplore](#) [Early Access](#) [Manuscript Submission](#)



[Website](#) | [Privacy Policy](#) | [Contact](#) | [Unsubscribe](#)

© {{my.copyright year}} IEEE – All rights reserved.

IEEE • 445 Hoes Lane, Piscataway, NJ 08854 USA