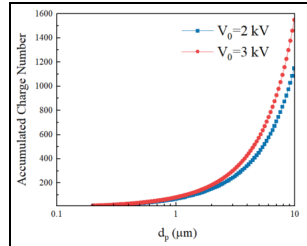


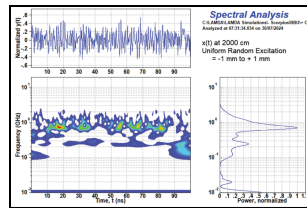
## Editor's Highlighted Articles



### Enhancing Martian Dust Filtration Through Advanced Corona Discharge-Based Electrostatic Precipitators for Sustainable Human Exploration

by Shihao Tan, Cuntao Lan, Haiwei Zhu, and Dawei Liu

[Read More](#)



### Further Beam Breakup Simulations for the Scorpius Linear Induction Accelerator

by Carl Ekdahl

[Read More](#)

IEEE TRANSACTIONS ON  
**PLASMA  
SCIENCE**

A PUBLICATION OF THE IEEE NUCLEAR AND PLASMA SCIENCES SOCIETY

APRIL 2025 VOLUME 53 NUMBER 4 ITPSBD (ISSN 0093-3813)

PART 4 of TWO PARTS

<b>Beam Physics in Fully and Partially Ionized Plasmas</b>	590
Stability Analysis of a Magnetically Confined Plasma With Quasi-Stationary Ion and a Uniformly Tapered Electron Beam	595
Effect of Ionization on the Discharge Characteristics of Air Streamer in Low-Temperature Atmospheric-Pressure Dielectric Barrier Discharge	600
<b>Micro-Plasma and Micro-Plasma Interactions</b>	614
Study of a High-Efficiency Dependent Collector for a 22.5-Tesla Steady-State Spherical Tokamak	614
Optimization and Diagnostic Quality Assessment of the Design of Plasma Diagnostics	622
Development of a 100-W Plasma Jet in 10 GHz	627
Direct Injection Laser Gas Treatment for DNA Reduction Using Microwave-Induced Plasma Source	633
<b>Charged Particle Beams and Beams</b>	643
Beam-Beam Interactions in the Scorpius Linear Induction Accelerator	643
Characterization of Laboratory-Scale Laser-Driven Micro-Plasma	649
<b>Industrial, Commercial, and Biological (Non-Medical) Applications of Plasmas</b>	661
Local Characterization of Electron Beam Discharge With Magnetically Coupled Cathodes	661
Minimum Currents for the Operation of a 100-W Plasma Jet in 10 GHz	669
Structure	671

IEEE

## IEEE Transactions on Plasma Science

A publication of the IEEE Nuclear and Plasma Sciences Society.

[VIEW THE TABLE OF CONTENTS](#)

[T-PS Home](#) [T-PS in IEEE Xplore](#) [Early Access](#) [Manuscript Submission](#)

[View the full series on IEEE Xplore.](#)

