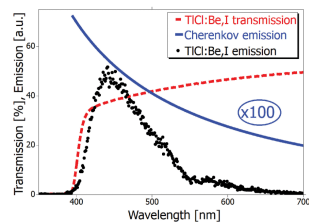
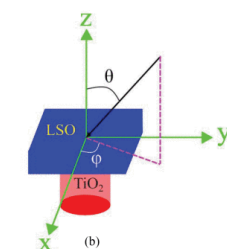
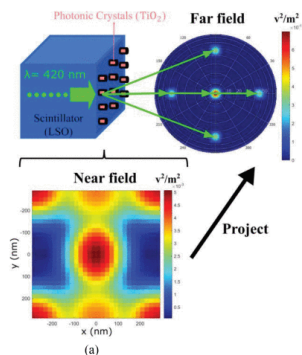


TRPMS has currently three special issues open for submissions (details in the specific links below)

- [Deployment of Large Models in Medical Imaging](#)
- [Generative AI in radiation based medical imaging](#)
- [Digital twins in medical imaging and therapy](#)

Features in This Issue



Implementation of Photonic Crystals Into Davis LUT Module for GATE Simulation

by Xuzhi He, Carlotta Trigila, and Emilie Roncali

[Read More](#)

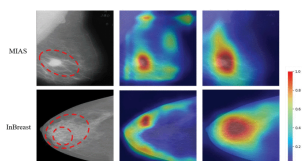
TiCl:Be,I: A High Sensitivity Scintillation and Cherenkov Radiator for TOF-PET

by Nicolaus Kratochwil, Nathaniel Kaneshige, Giulia Terragni, Roberto Cala, Jared Schott, and Edgar van Loef

[Read More](#)

BTMuda: A Bi-Level Multisource Unsupervised Domain Adaptation Framework for Breast Cancer Diagnosis

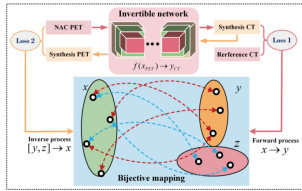
by Yuxiang Yang, Xinyi Zeng, Pinxian Zeng, Binyu Yan, Xi Wu, and Jiliu Zhou



[Read More](#)

Synthetic CT Generation via Variant Invertible Network for Brain PET Attenuation Correction

by Yu Guan, Bohui Shen, Shirui Jiang, Xinchong Shi, Xiangsong Zhang, and Bingxuan Li



[Read More](#)



IEEE Transactions on Radiation and Plasma Medical Sciences

[VIEW CURRENT ISSUE](#)

[T-RPMS Home](#) [T-RPMS in IEEE Xplore](#) [Early Access](#) [Manuscript Submission](#)



[Website](#) | [Privacy Policy](#) | [Contact](#) | [Unsubscribe](#)

© {{my.copyright year}} IEEE – All rights reserved.

IEEE • 445 Hoes Lane, Piscataway, NJ 08854 USA