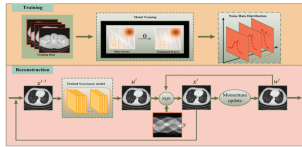


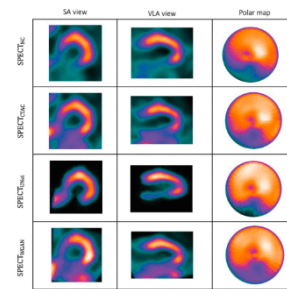
Features in This Issue



Iterative Reconstruction for Low-Dose CT Using Deep Gradient Priors of Generative Model

by Zhuonan He, Yikun Zhang, Yu Guan, Bing Guan, Shanzhou Niu, Yi Zhang, Yang Chen, and Qiegen Liu

[Read More](#)

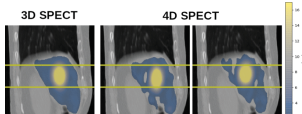


(a)

Data Management and Network Architecture Effect on Performance Variability in Direct Attenuation Correction via Deep Learning for Cardiac SPECT: A Feasibility Study

by Mahsa Torkaman, Jaewon Yang, Luyao Shi, Rui Wang, Edward J. Miller, Albert J. Sinusas, Chi Liu, Grant T. Gullberg, and Youngho Seo

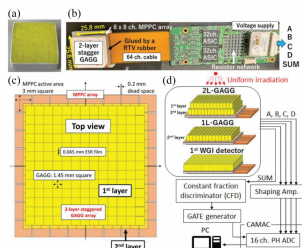
[Read More](#)



Data-Driven Respiration-Gated SPECT for Liver Radioembolization

by Antoine Robert, Simon Rit, Thomas Baudier, Julien Jomier, and David Sarrut

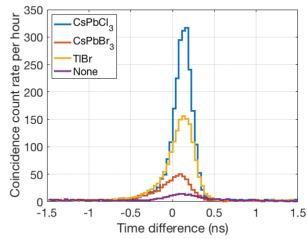
[Read More](#)



Development of a Two-Layer Staggered GAGG Scatter Detector for Whole Gamma Imaging

by Sodai Takyu, Eiji Yoshida, Fumihiko Nishikido, Fujino Obata, Hideaki Tashima, Kei Kamada, Akira Yoshikawa, and Taiga Yamaya

[Read More](#)



Study of Annihilation Photon Pair Coincidence Time Resolution Using Prompt Photon Emissions in New Perovskite Bulk Crystals

by Li Tao, Yihui He, Mercuri G. Kanatzidis, and Craig S. Levin

[Read More](#)



IEEE Transactions on Radiation and Plasma Medical Sciences

[VIEW CURRENT ISSUE](#)

[T-RPMS Home](#) [T-RPMS in IEEE Xplore](#) [Early Access](#) [Manuscript Submission](#)



[Website](#) | [Privacy Policy](#) | [Contact](#) | [Unsubscribe](#)

© {{my.copyright year}} IEEE— All rights reserved.