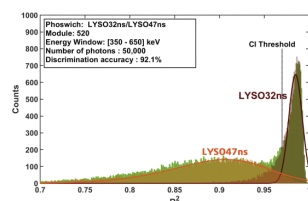


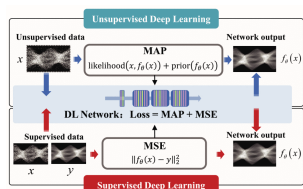
Features in This Issue



Investigation of a Model-Based Time-Over-Threshold Technique for Phoswich Crystal Discrimination

by Haithem Bouziri, Catherine M. Pepin, Konin Koua, Maher Benhouria, Caroline Paulin, Jinsong Ouyang; Marc Normandin, Jean-François Pratte, Georges El Fakhri, Roger Lecomte, and Réjean Fontaine

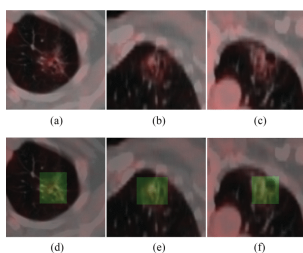
[Read More](#)



Noise-Generating-Mechanism-Driven Unsupervised Learning for Low-Dose CT Sinogram Recovery

by Dong Zeng, Lei Wang, Mingrui Geng, Sui Li, Yun Deng, Qi Xie, Danyang Li, Hua Zhang, Yuanqing Li, Zongben Xu, Deyu Meng, and Jianhua Ma

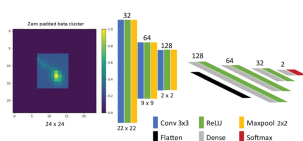
[Read More](#)



Multimodality Attention-Guided 3-D Detection of Non-small Cell Lung Cancer in 18F-FDG PET/CT Images

by Ling Chen, Kanfeng Liu, Hui Shen, Hongwei Ye, Huafeng Liu, Lijuan Yu, Jingsong Li, Kui Zhao, and Wentao Zhu

[Read More](#)



Deep Learning Signal Discrimination for Improved Sensitivity at High Specificity for CMOS Intraoperative Probes

by Joshua Moo, Paul Marsden, Kunal Vyas, and Andrew J. Reader

[Read More](#)

Optimized Methodology for Reference Region and Image-Derived Input Function Kinetic Modeling in Preclinical PET

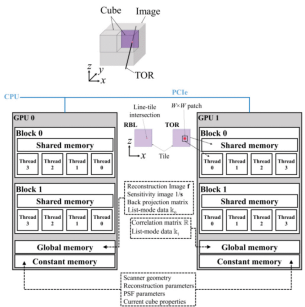
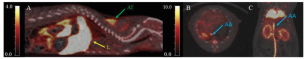
by Jason Bini, Christine R. Lattin, Takuya Toyonaga, Sjoerd J. Finnema, and Richard E. Carson

[Read More](#)

A Cube-Based Dual-GPU List-Mode Reconstruction Algorithm for PET Imaging

by Mohammadreza Teimoorisichani, and Andrew L. Goertzen

[Read More](#)



IEEE Transactions on Radiation and Plasma Medical Sciences

[VIEW CURRENT ISSUE](#)

[T-RPMS Home](#) [T-RPMS in IEEE Xplore](#) [Early Access](#) [Manuscript Submission](#)



© {{my.copyright year}} IEEE— All rights reserved.

[Website](#) | [Privacy Policy](#) | [Contact](#) | [Unsubscribe](#)