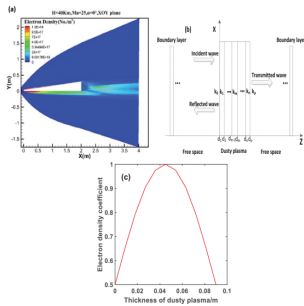


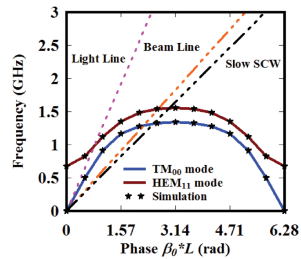
Features in This Issue



Research on Electromagnetic Wave Propagation Characteristics of Fully Ionized Inhomogeneous Dusty Plasma in a Magnetized BGK Model

by Wei Chen, Zuyu Wang, Lixia Yang, Zhixiang Huang, Lixin Guo, and Liufeng Wang

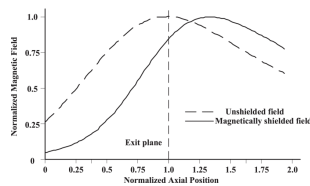
[Read More](#)



Beam-Wave Interaction Analysis Inside an Azimuthally Partitioned Axially Periodic Disk-Loaded Coaxial Structure for Bifrequency MILO

by Arjun Kumar, Prabhakar Tripathi, Smrity Dwivedi, and P. K. Jain

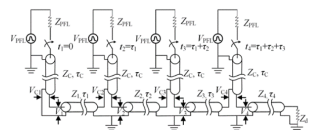
[Read More](#)



Simulation of Pole Erosion in Magnetically Shielded and Unshielded Hall Thrusters

by Zhaoyu Wan, Hong Li, Chao Zhong, Jinwen Liu, Yongjie Ding, Liqiu Wei, and Daren Yu

[Read More](#)

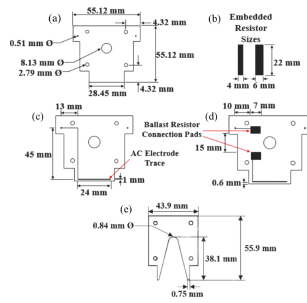


Design of MITL for a 3.8-mV Gamma-Ray Radiation Facility

by Bowen Zhao, Jiang Sun, Yixiang Hu, Dan Cai, Jinhai Zhang, Yang Hu, Jiangtao Zeng, Jiangfeng Sun, Peitian Cong, and Xuewu Wang

[Read More](#)

Fabrication and Performance of a Multidischarge Cold-Atmospheric Pressure Plasma Array



by Kenneth A. Cornell, Amanda White, Adam Croteau, Jessica Carlson, Zeke Kennedy, Dalton Miller, Mariah Provost, Spencer Goering, Don Plumlee, and Jim Browning

[Read More](#)



IEEE Transactions on Plasma Science

A publication of the IEEE Nuclear and Plasma Sciences Society.

[VIEW THE TABLE OF CONTENTS](#)



[T-PS Home](#) [T-PS in IEEE Xplore](#) [Early Access](#) [Manuscript Submission](#)

[View the full series on IEEE Xplore.](#)



Website | [Privacy Policy](#) | [Unsubscribe](#)

© {{my.copyright year}} IEEE— All rights reserved.