

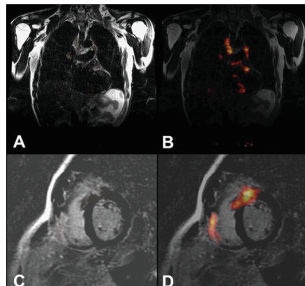
## Features in This Issue



### Total Body PET: Why, How, What for

by Suleman Surti, Austin R. Pantel, and Joel S. Karp

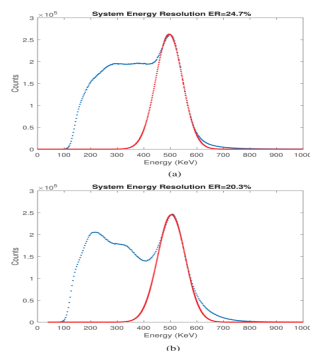
[Read More](#)



### Potential clinical applications of PET/MR.

by Caecilia E. Mader, Tobias Fuchs, Daniela A. Ferraro, and Irene A. Burger

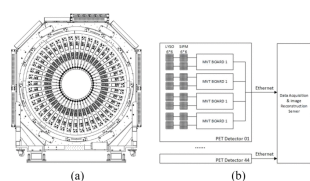
[Read More](#)



### Neural-Network-Based Energy Calculation for Multivoltage Threshold Sampling

by Hao Xu, Hao Wang, Feng Xu, Ran Cheng, Bo Zhang, Lei Fang, Qingguo Xie, and Peng Xiao

[Read More](#)

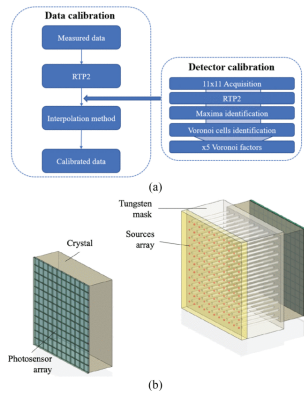


### Evaluation of a digital brain Positron Emission Tomography scanner based on the Plug&Imaging sensor technology

by Nicola D'Ascenzo, Emanuele Antonecchia, Min Gao, Xiangsong Zhang, Gerhard Baumgartner, Andreas Brensing, Zhen Li, Qiong Liu, Georg Rose, Xinchong Shi, Chien-Min Kao, Jiazuan Ni, and Qingguo Xie

[Read More](#)

### Calibration of Gamma Ray Impacts



## in Monolithic-Based Detectors Using Voronoi Diagrams

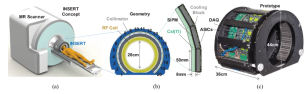
by Marta Freire, Andrea Gonzalez-Montoro, Filomeno Sanchez, Jose M. Benlloch, and Antonio J. Gonzalez

[Read More](#)

## Clinical SiPM-Based MRI-Compatible SPECT: Preliminary Characterization

by M. Carminatii, I. D'Adda, A. J. Morahan, K. Erlandsson, K. Nagy, M. Czeller, B. Tölgyesi, Z. Nyitrai, A. Savi, P. van Mullekom, B. F. Hutton, and C. Fiorini

[Read More](#)



## IEEE Transactions on Radiation and Plasma Medical Sciences

[VIEW CURRENT ISSUE](#)

[T-RPMS Home](#) [T-RPMS in IEEE Xplore](#) [Early Access](#) [Manuscript Submission](#)



© {{my.copyright year}} IEEE— All rights reserved.

[Website](#) | [Privacy Policy](#) | [Contact](#) | [Unsubscribe](#)