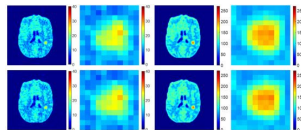


Features in This Issue



Structure and Tracer Kinetics-Driven Dynamic PET Reconstruction

by Jianan Cui, Zhongya Qin, Shuhang Chen, Yunmei Chen, and Huafeng Liu

[Read More](#)

Joint Activity and Attenuation Reconstruction from Multiple Energy Window Data with Photopeak Scatter Re-Estimation in non-TOF 3D PET

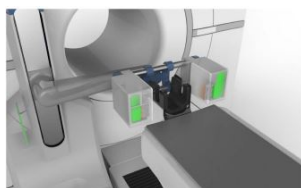
by Ludovica Brusaferrì, Alexandre Bousse, Elise C. Emond, Richard Brown, Yu-Jung Tsai, David Atkinson, Sebastien Ourselin, Charles C. Watson, Brian F. Hutton, Simon Arridge, and Kris Thielemans

[Read More](#)

Convolutional Neural Network for Crystal Identification and Gamma Ray Localization in PET

by Andy La Bella, Paul Vaska, Wei Zhao, and Amir H. Goldan

[Read More](#)



Design Study of a Dedicated Head and Neck Cancer PET System

by Mohan Li, Brett Yockey, and Shiva Abbaszadeh

[Read More](#)



IEEE Transactions on Radiation and Plasma Medical Sciences

[VIEW CURRENT ISSUE](#)

[T-RPMS Home](#) [T-RPMS in IEEE Xplore](#) [Early Access](#) [Manuscript Submission](#)



[Website](#) | [Privacy Policy](#) | [Contact](#) | [Unsubscribe](#)

© {{my.copyright year}} IEEE— All rights reserved.