

IEEE TRANSACTIONS ON RADIATION AND PLASMA MEDICAL SCIENCES

JANUARY 2020

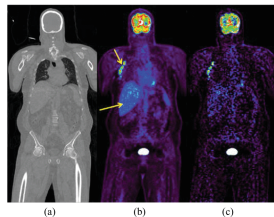
VOLUME 4

NUMBER 1

ITRPFI

(ISSN 2469-7311)

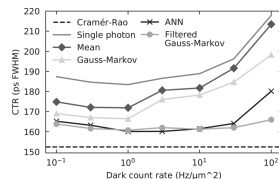
Features in This Issue



Parametric Imaging with PET and SPECT

by Jean-Dominique Gallezot, Yihuan Lu, Mika Naganawa, and Richard E. Carson

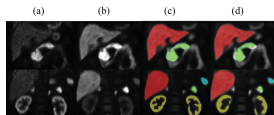
[Read More](#)



Dark Count Resilient Time Estimators for Time-of-Flight PET

by William Lemaire, Audrey C. Therrien, Jean-François Pratte, and Réjean Fontaine

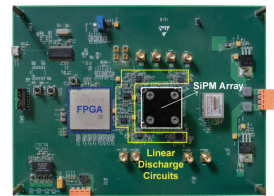
[Read More](#)



Atlas-based Multi-Organ Segmentation for Dynamic Abdominal PET

by Silin Ren, Priscille Laub, Yihuan Lu, Mika Naganawa, and Richard E. Carson

[Read More](#)



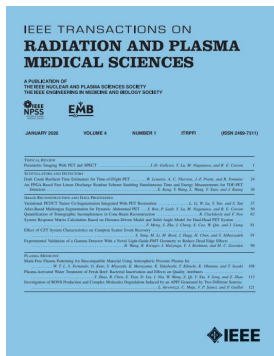
An FPGA-based Fast Linear Discharge Readout Scheme Enabling Simultaneous Time and Energy Measurements for TOF-PET Detectors

by Xiaoguang Kong, Yonggang Wang, Liwei Wang, Yong Xiao, and Jie Kuang

[Read More](#)

**IEEE Transactions on Radiation and
Plasma Medical Sciences**

[VIEW CURRENT ISSUE](#)



[T-RPMS Home](#) [T-RPMS in IEEE Xplore](#) [Early Access](#) [Manuscript Submission](#)



[Website](#) | [Privacy Policy](#) | [Contact](#) | [Unsubscribe](#)

© {{my.copyright year}} IEEE– All rights reserved.