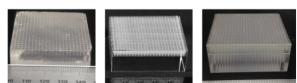


IEEE TRANSACTIONS ON **RADIATION AND PLASMA MEDICAL SCIENCES**

SEPTEMBER 2019 VOLUME 3 NUMBER 4 ITRPFI (ISSN 2469-7311)

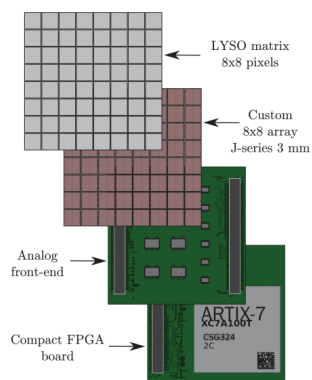
Features in This Issue



Characterization of Monolithic Scintillation Detectors Etched With Laser Induced Optical Barriers

by J. V. Panetta, S. Surti, B. Singh, J. S. Karp

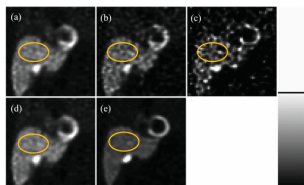
[Read More](#)



Toward a Full-Flexible and Fast-Prototyping TOF-PET Block Detector Based on TDC-on-FPGA

by Esteban Venialgo, Nicola Lusardi, Fabio Garzetti, Angelo Geraci, Stefan E. Brunner, Dennis R. Schaart, Edoardo Charbon

[Read More](#)



Comparison of Different Attenuation Correction Methods for Dual Gating Myocardial Perfusion SPECT/CT

by Qi Zhang, Duo Zhang, Greta S. P. Mok

[Read More](#)

**IEEE Transactions on Radiation
and Plasma Medical Sciences**

[VIEW CURRENT ISSUE](#)

