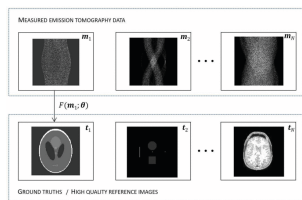
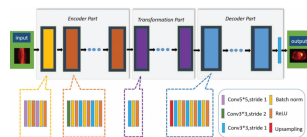


## Features in This Issue



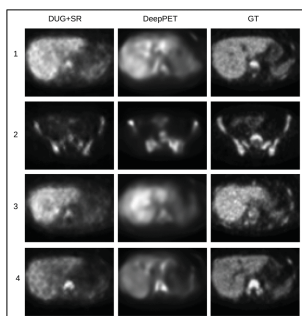
### Deep Learning for PET Image Reconstruction

by Andrew J. Reader, Guillaume Corda, Abolfazl Mehranian, Casper da Costa-Luis, Sam Ellis, and Julia A. Schnabel

[Read More](#)

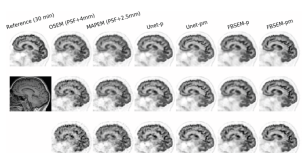
### DPIP-Net: Direct PET image reconstruction based on the Wasserstein generative adversarial network

by Zhanli Hu, Hengzhi Xue, Qiyang Zhang, Juan Gao, Na Zhang, Sijuan Zou, Yueyang Teng, Xin Liu, Yongfeng Yang, Dong Liang, Xiaohua Zhu, and Hairong Zheng

[Read More](#)

### DUG-RECON: A Framework for Direct Image Reconstruction using Convolutional Generative Networks

by V.S.S. Kandarpa, Alexandre Bousse, Didier Benoit, and Dimitris Visvikis

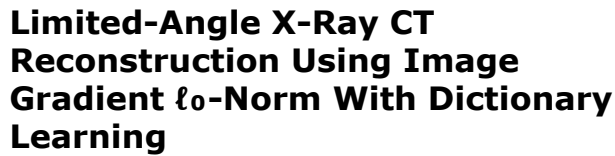
[Read More](#)

### Model-Based Deep Learning PET Image Reconstruction Using Forward-Backward Splitting Expectation Maximisation

by Abolfazl Mehranian, and Andrew J. Reader

[Read More](#)

### FastPET: Near Real-Time

[Read More](#)[Read More](#)[Read More](#)

[T-RPMS Home](#)   [T-RPMS in IEEE Xplore](#)   [Early Access](#)   [Manuscript Submission](#)

